

## territory campus

## structure

re-inscribing the site in its geographical location

fort of Noisy-le-Sec

Romainville plateau

« Les Grands champs »

« Chemin vert »

« Les Ormes »

A3 highway

T1  
Tramway

The measured urbanization of the southern territory of Romainville was deeply conditioned by its original land-parcels organization. From the Romainville plateau to Montreuil, the urban fabric oriented to allow the implantation of agricultural activities in the heart of different neighborhoods.

This partially conserved structure, materialized by walls, might today constitute a source, a memory pool from which Romainville's quartier des Ormes will, once again, transpose and differentiate its urban shape.

From 1965 on, highway A3 started to fracture the urban fabric, isolating the quartier des Ormes from the rest of Romainville. Moreover, until the 80s, lots of modern constructions were built (quartier du Chemin Vert), without taking into account the fabric orientation or pre-existing territorial structures, even making disappear the traditional parcel-based structure.

Nowadays, two very different ways of occupying the territory are in conflict. The first one is oriented towards a parcel-based decoupage, the other being born from a modern heritage associating new typologies (towers, blocks of buildings) to an open, non-parcelled space.

T1 asks questions about the reorientation of parcels in the context of public development. The north-south agricultural structure, materialized by party walls coming down from the plateau towards the South is one of the territory's strong identities which it should be possible to maintain and use to recreate continuities, links between neighborhoods, singular public spaces. Those walls constitute a structure which live through time but whose usefulness changes and varies according to the times.

Saint-Antoine district  
peach bearing walls



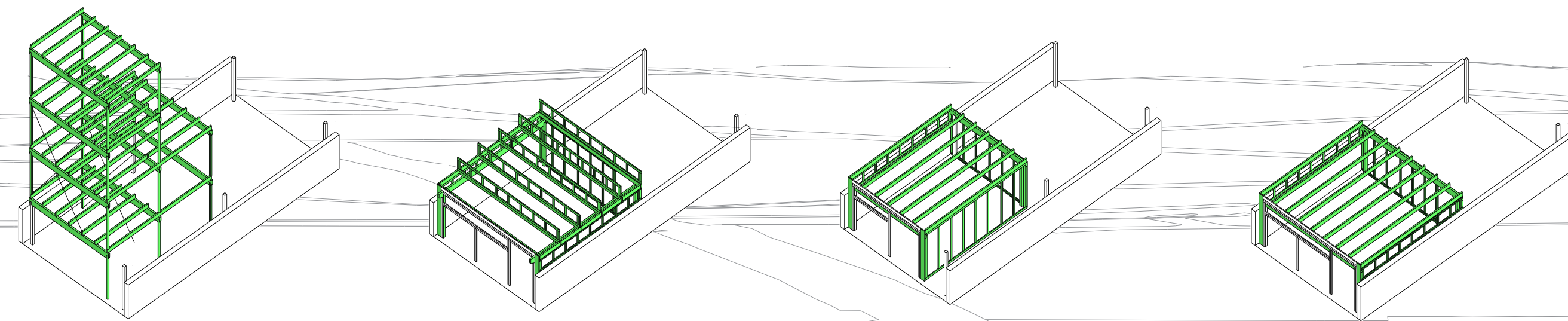
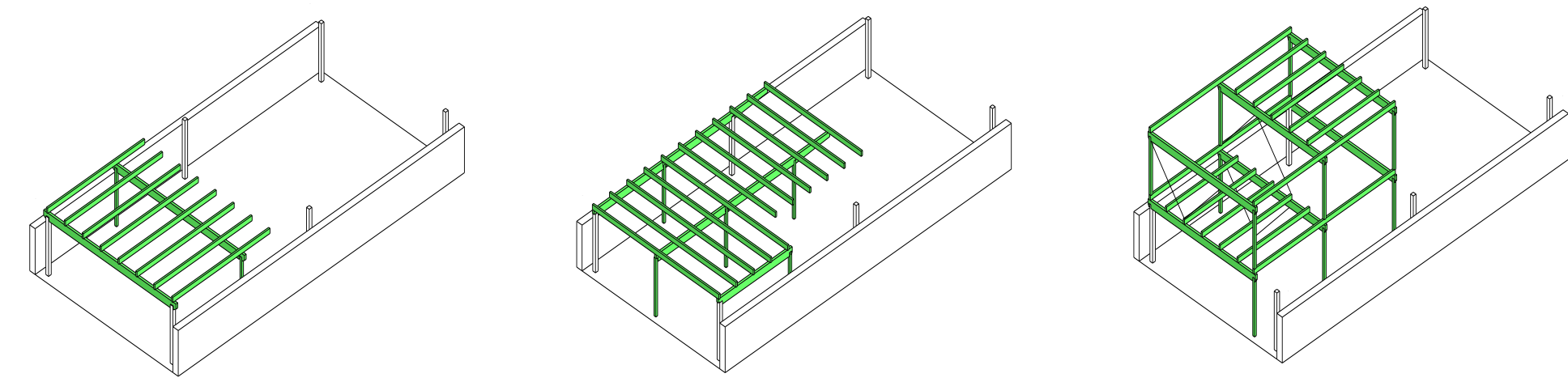
# systems

towards new uses of the territory

By choosing as an example one of the most remarkable city blocks from the quartier des Ormes, and maybe the one that will be the most altered by the T1 tramway project (located between the rue des Ormes and the rue de la libre pensée), we can affirm that this territorial structure is consistent, lodged into a spectrum from 4 to 12 meters wide. An average width of 8 meters has appeared as able to optimize the challenges of the site while inscribing itself into existing structures.

The constructions will not lean towards the equipment walls, but will come and "rest" on them in case of party walls, or will be built in the heart of the parcels. In order to achieve this common process, the buildings will have to lean on a weft of pillars generalized on the whole of the site, 8meters / 8 meters, and will benefit from their own wooden bone structure, light, dismountable and produced by local enterprises.

Two different scales of construction will be part of the site, according to their occupations and programs. A short scale, "within the walls" : that of activities, gardens, residence, research laboratories, relaxing or working common areas ; a higher scale overbearing the walls, that of wider programs : formation centers, demonstration, sports events.



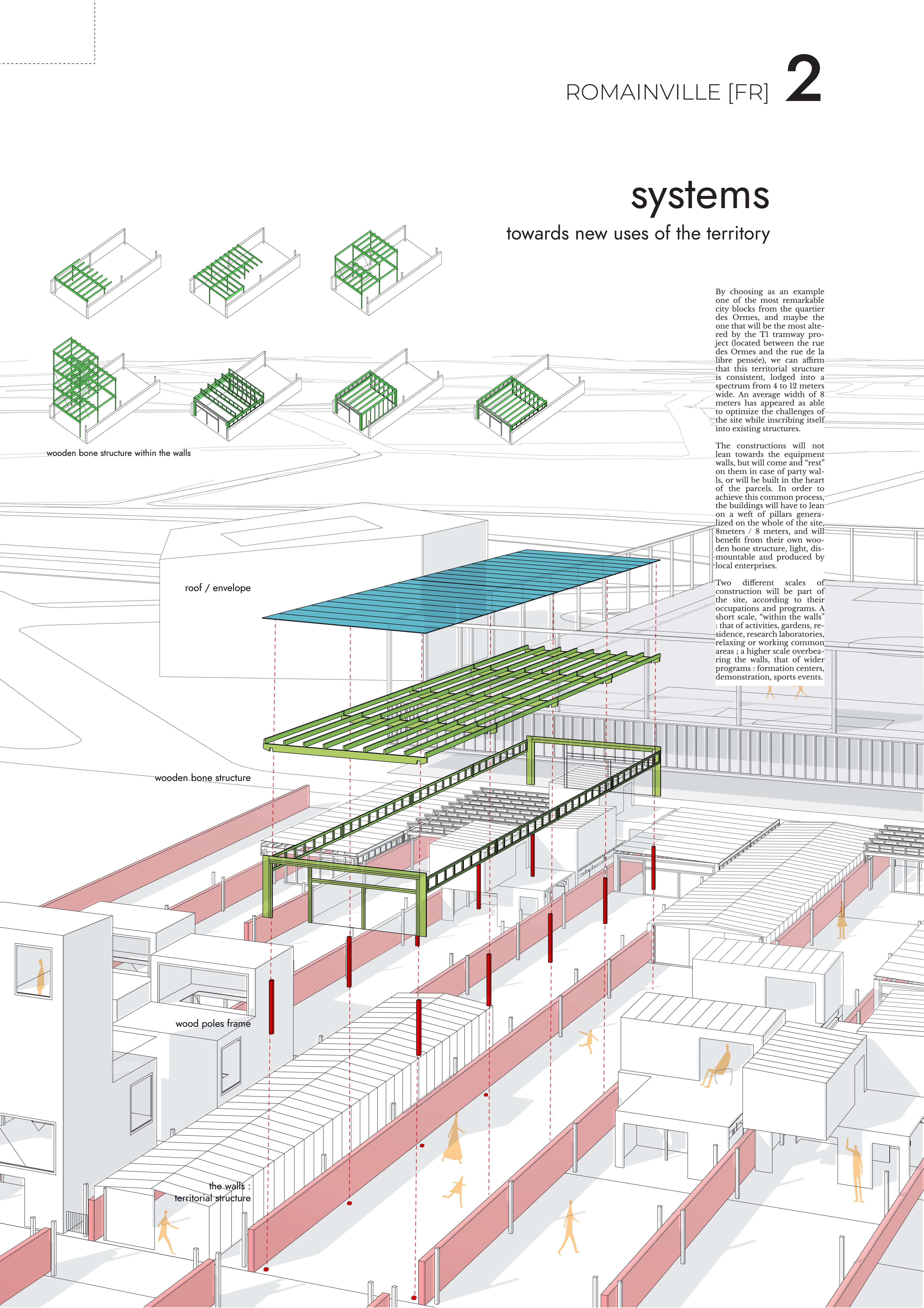
wooden bone structure within the walls

roof / envelope

wooden bone structure

wood poles frame

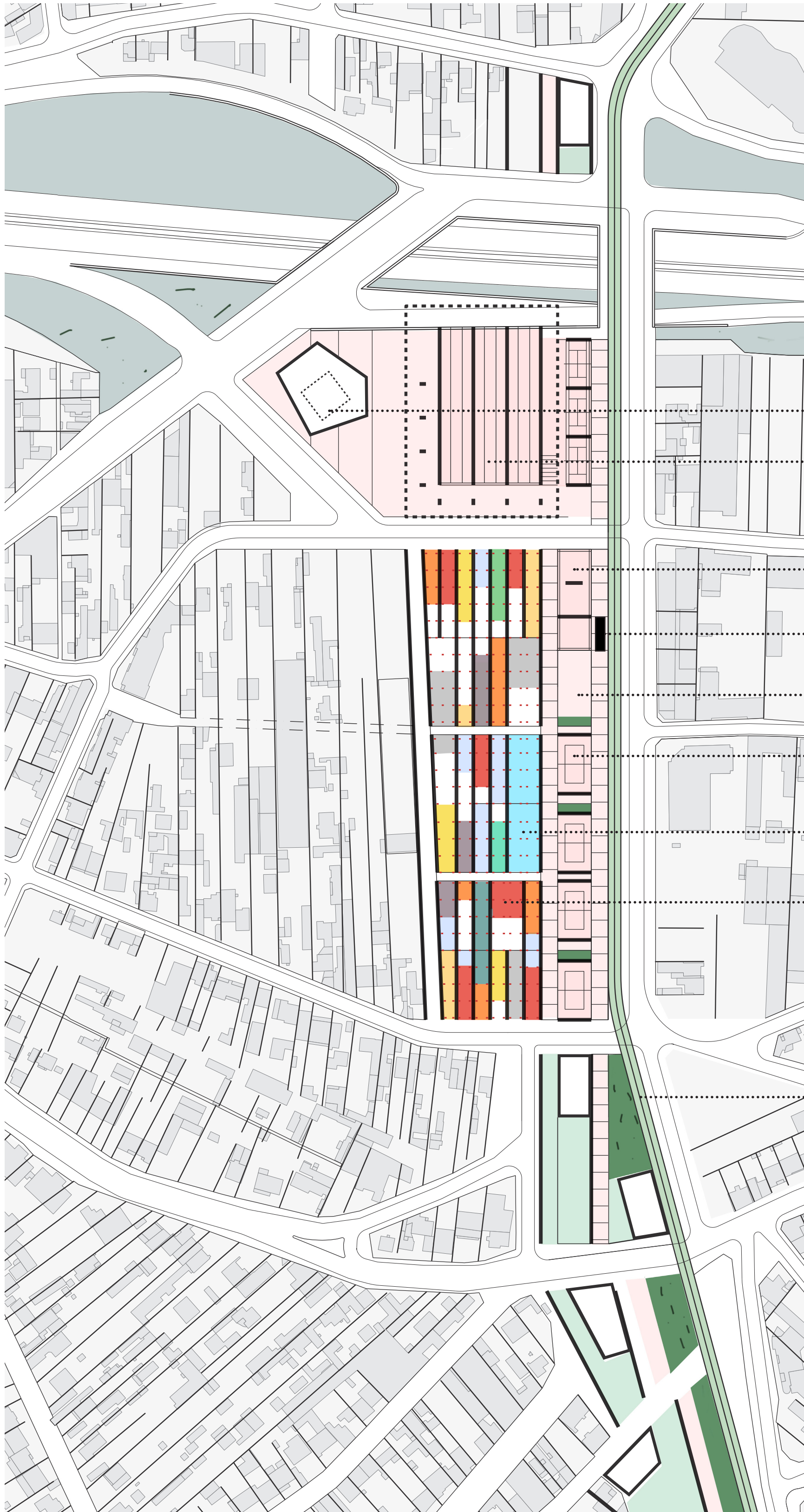
the walls : territorial structure





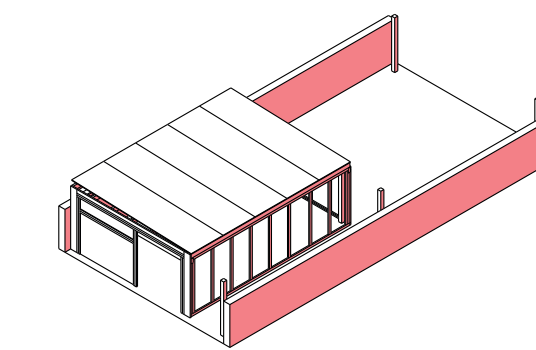
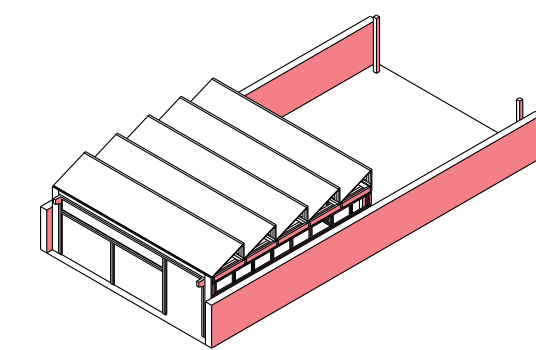
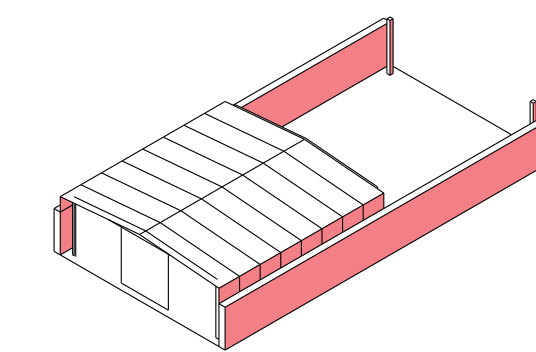
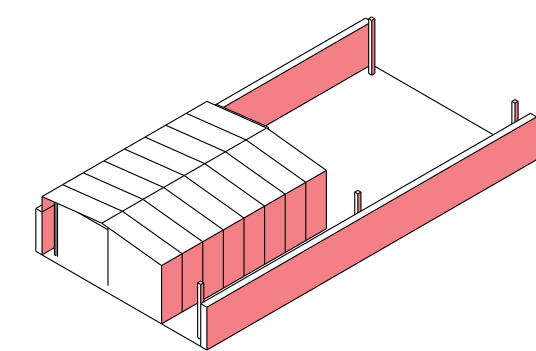
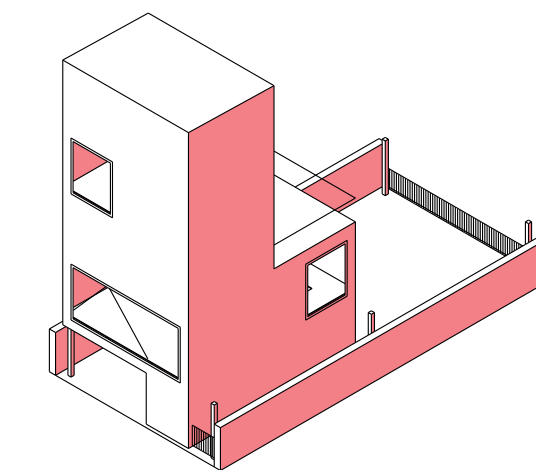
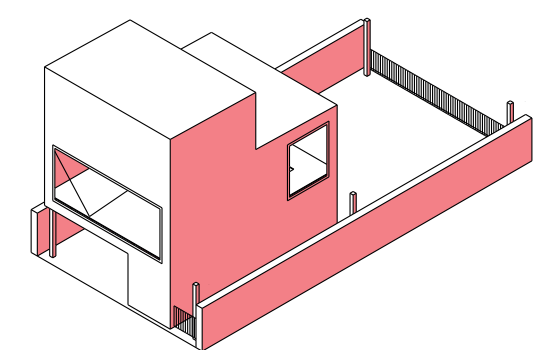
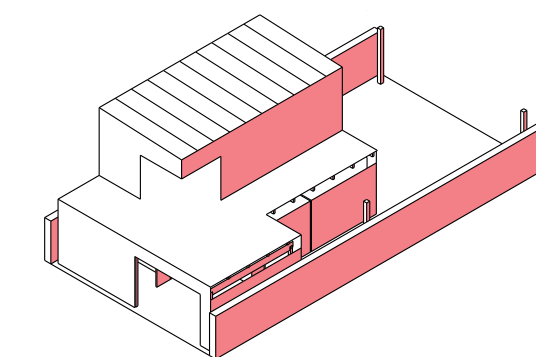
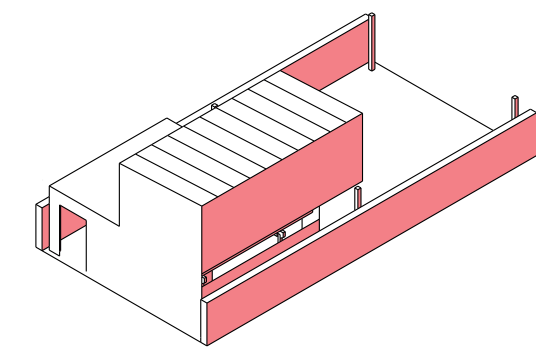
# campus

an equipment for the territory



schematic ground floor plan

- campus showroom
- parking 200 pl. under multi-sports equipment
- restaurant
- « libre pensée » T1 station
- public terrace
- sports training, individual or open activities
- learning center
- productive and housing district in the campus area
- T1 tramway towards Montreuil and peach bearing walls



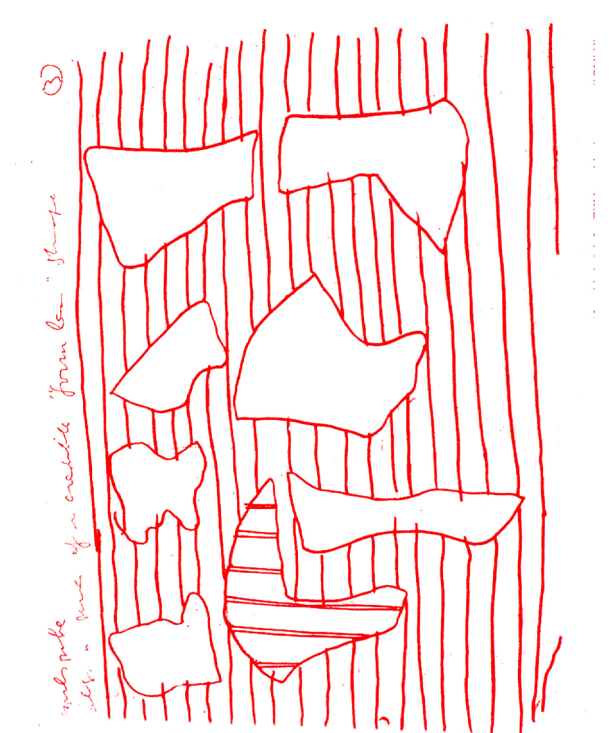
The territory campus is an intermunicipal sports, in relation with the highway and tramway infrastructures. It is materialized by a multi-functional overseeing the highway, which accommodates different sports activities and varied pitches (soccer, tennis, basketball, a dojo for gymnastics, martial arts and yoga).

The territory campus is an innovative place of activity, turned towards technology and the environment.

The activity fabric of the campus is, thus, composed of associations, small enterprises and startups, a laboratory, a fablab, business incubators, or an open space.

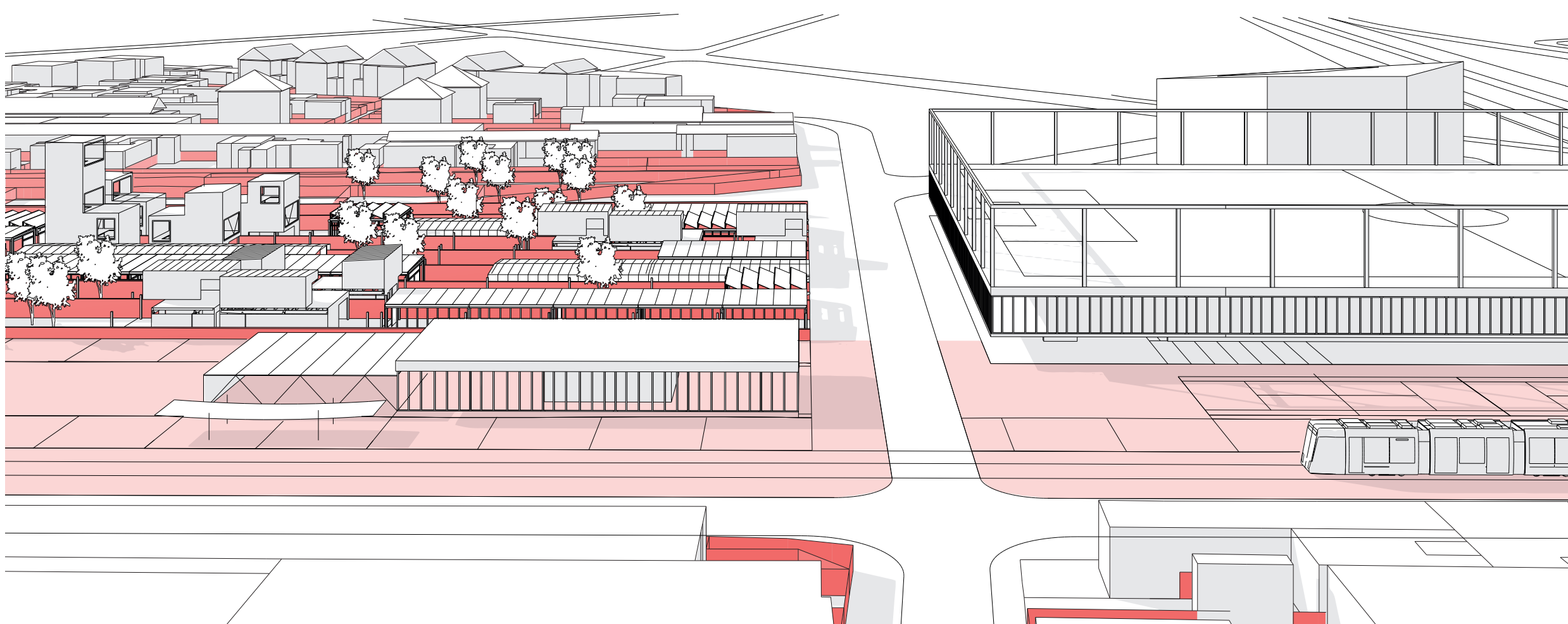
The campus is a place of living, in which lodgings are many. Renting places offer a space of work and life for young people from the workforce.

The campus is a spatial structure in which activities are developed, activities that are as heterogeneous as they are complementary. It is firmly turned towards innovation, new methods of working and the presentation of these activities to the public. It is an equipped park, a fabric of professional and sports activities, organized all around common places and areas. This equipment's vocation is to serve private and public interests, a showcase of innovation for Romainville.



OMA - « très grande bibliothèque », 1989

prototypes of new housing, activities and industries built in the 8x16m grid



the tramway public deck and the multi-sports equipment



within the walls : activities and housing of the territory campus

public deck toward multi-sports equipment

tramway T1