

NANTES [FR]

matière première

a rediscovered city/Loire relationship

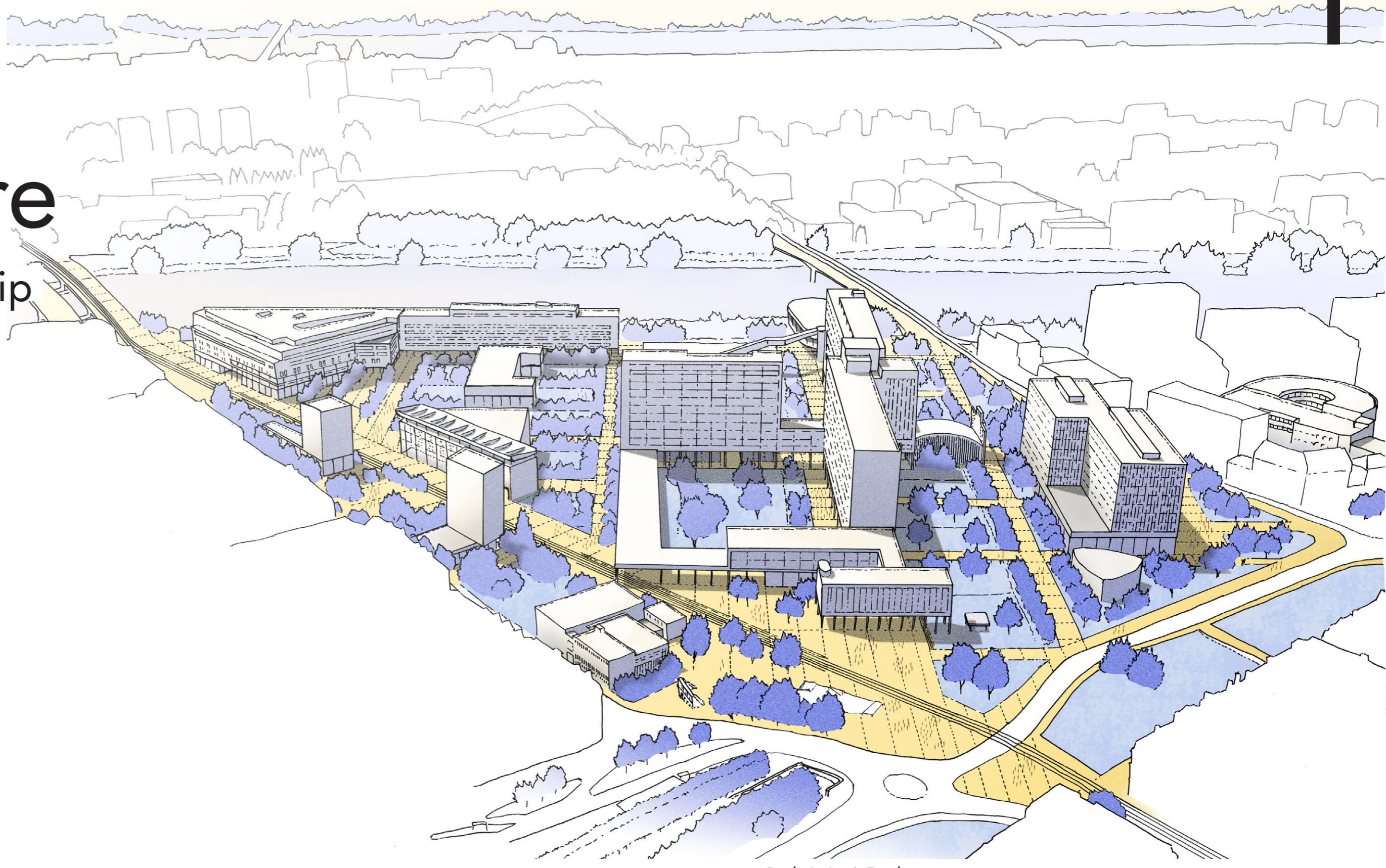
Matière première is the weaving of a relationship between the present forces, of which the site of the Hôtel Dieu constitutes a place of convergence. It is to reveal the evidence of a landscape and urban figure.

The project proposes to reinstall an in-depth relationship between the Loire and the north shore of Nantes by creating a large landscape and hydraulic framework structuring the «hollow» mutation of the Hôtel Dieu site. Targeted demolitions and restructuring of existing buildings open up new crossings and gradually form the fabric of a porous north-south park from the Loire to Feydeau.

This depth relationship takes on its full meaning through the central location of the Hôtel Dieu at the convergence of major geographical and urban continuities. The opening of the Hôtel Dieu site as a place of interface revealing the depth relationship between the city and the Loire, becomes the central piece of a broader dynamic. That of a large Loire park integrating the banks of the river, the Feydeau mall, the Chaussée de la Madeleine, the Petite Hollande, which federates the large landscape fragments.

The transformation of the hospital site takes place through the exploration of several programmatic axes, partly in line with the continuity of the existing occupation: firstly to perpetuate an activity articulated around the «care of the living» in the broad sense, after the departure of the hospital with, in particular, the maintenance of a local health service. Second, install a sports and leisure framework in the open air and in rehabilitated equipment. Finally, welcoming a new residential dimension in the most emblematic buildings: the «cross» and the Mother and Child building, designed by Michel Roux-Spitz and the university building designed by Louis Arretche.

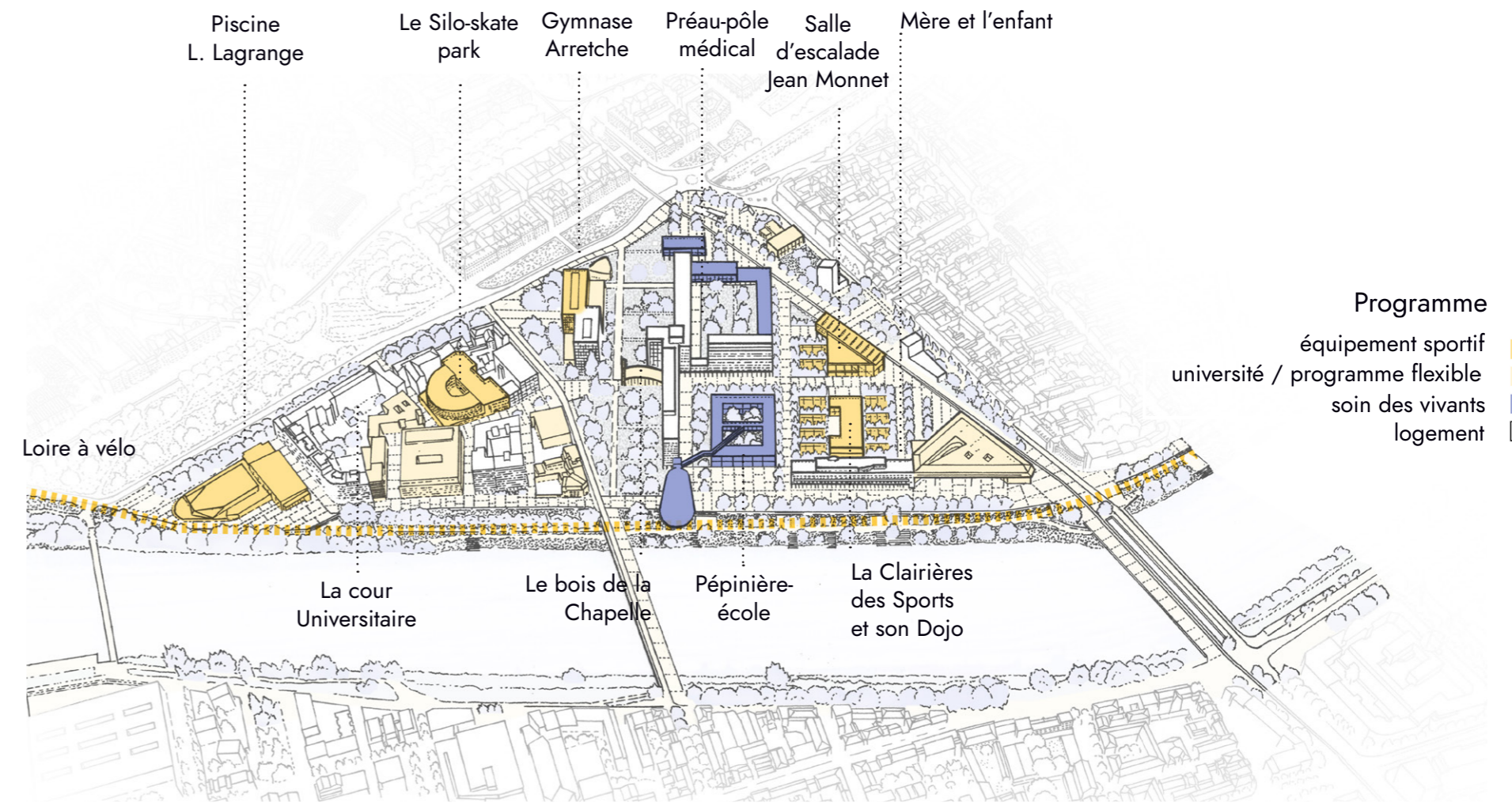
What will be left in the end is to identify a flexible reserve for the transformation of equipment and services directly addressed to the existing city, the programming of which would be to be agreed with local actors.



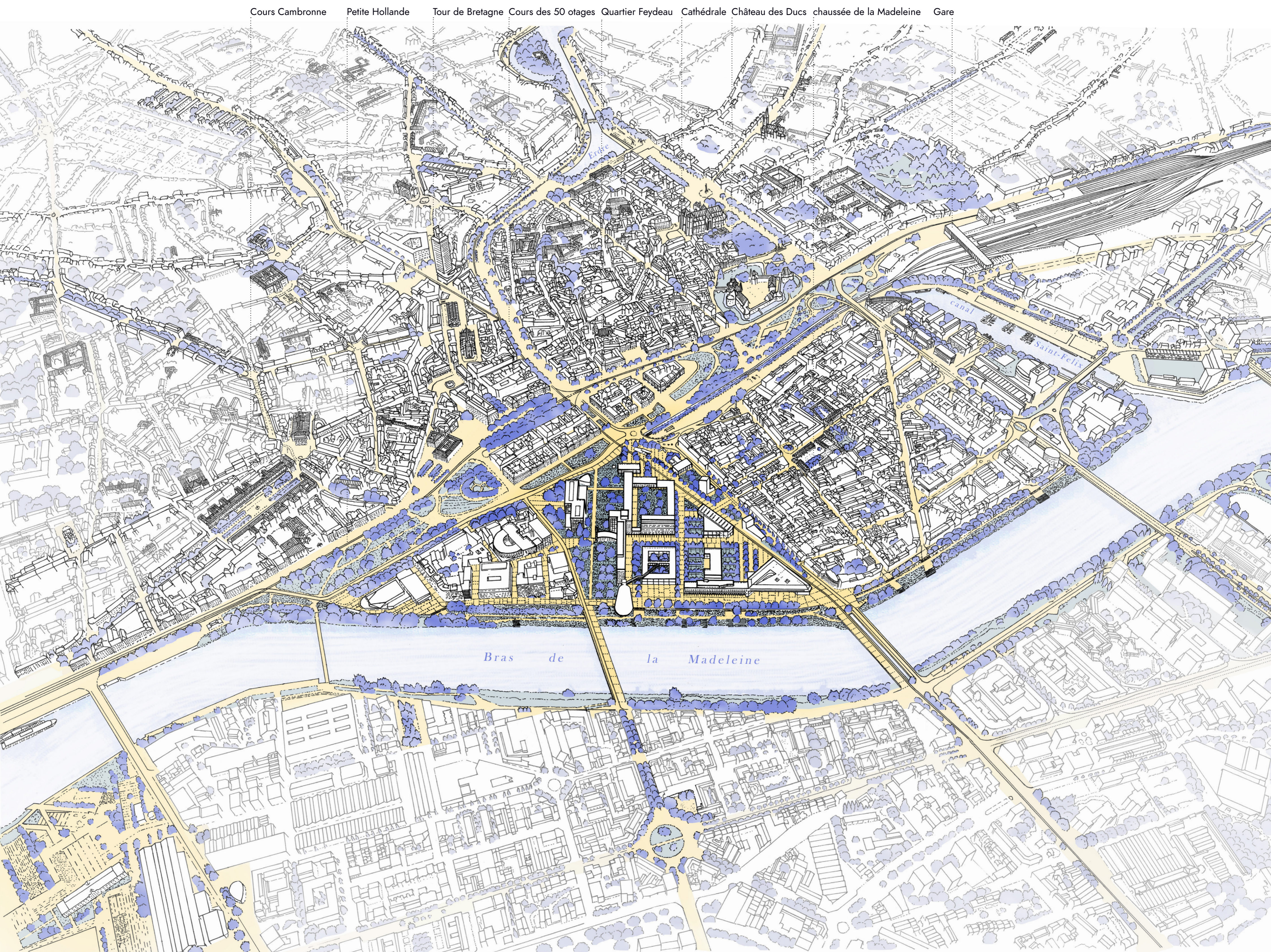
De la Loire à Feydeau



Un grand parc de Loire au coeur de la Métropole nantaise



Installer la ville diversifiée dans le parc



Cours Cambronne Petite Hollande Tour de Bretagne Cours des 50 otages Quartier Feydeau Cathédrale Château des Ducs chaussée de la Madeleine Gare

NANTES [FR]

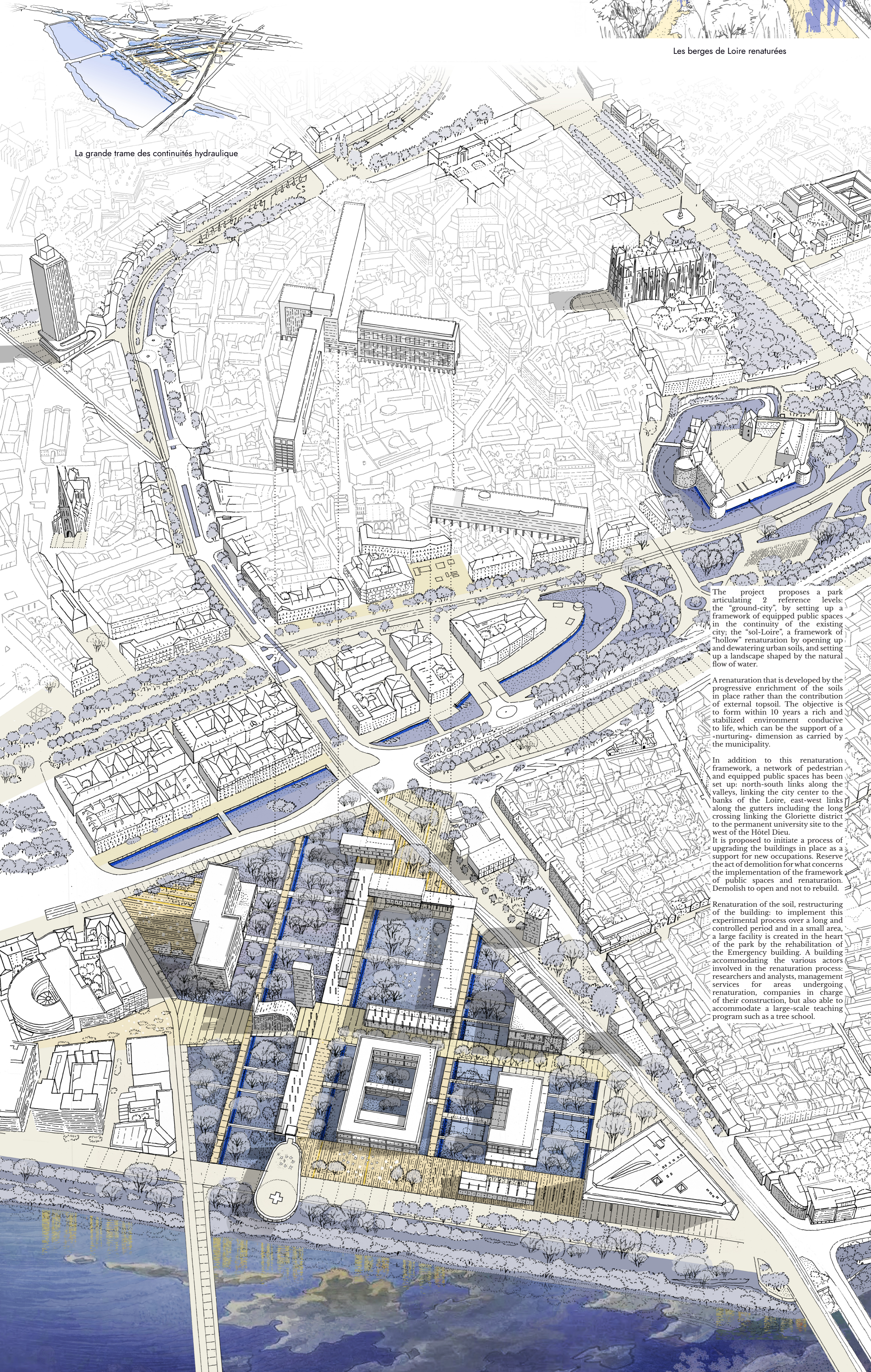
the regeneration table

a fertile and equipped park, a rehabilitated heritage



Les berges de Loire renaturées

La grande trame des continuités hydraulique



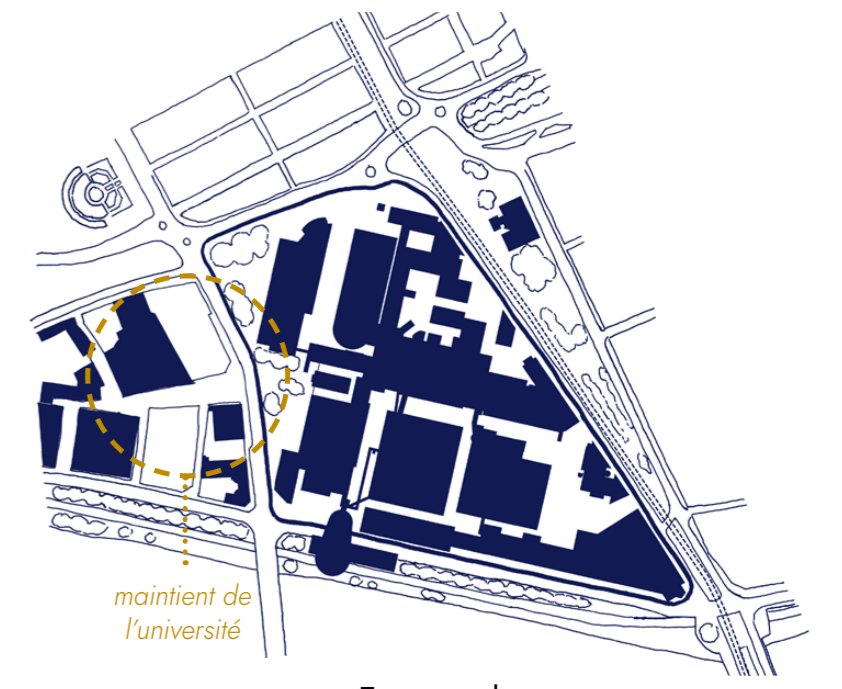
The project proposes a park articulating 2 reference levels: the "ground-city", by setting up a framework of equipped public spaces in the continuity of the existing city; the "sol-Loire", a framework of "hollow" renaturation by opening up and dewatering urban soils, and setting up a landscape shaped by the natural flow of water.

A renaturation that is developed by the progressive enrichment of the soils in place rather than the contribution of external topsoil. The objective is to form within 10 years a rich and stabilized environment conducive to life, which can be the support of a "nurturing" dimension as carried by the municipality.

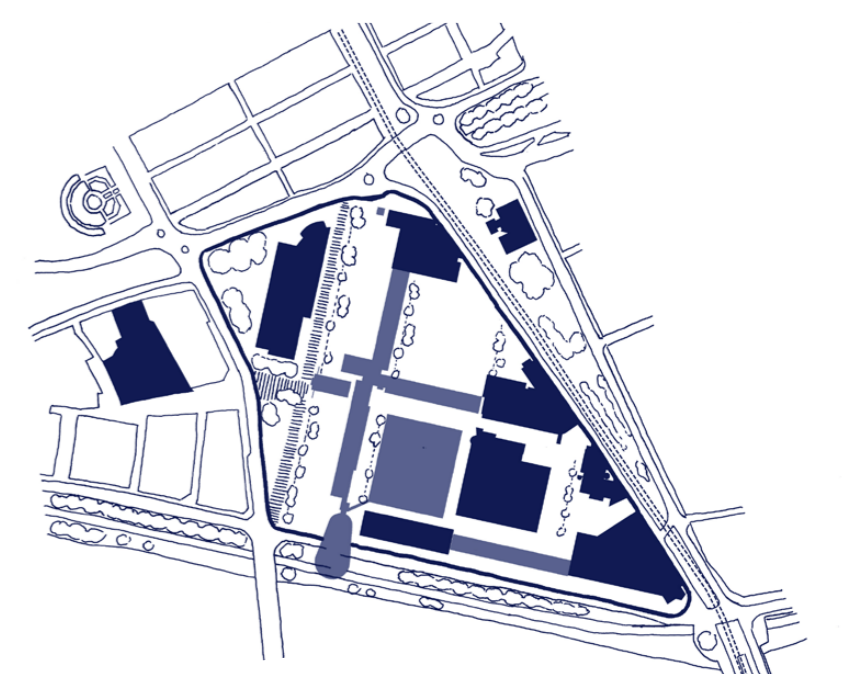
In addition to this renaturation framework, a network of pedestrian and equipped public spaces has been set up: north-south links along the valleys, linking the city center to the banks of the Loire, east-west links along the gutters including the long crossing linking the Gloriette district to the permanent university site to the west of the Hôtel Dieu.

It is proposed to initiate a process of upgrading the buildings in place as a support for new occupations. Reserve the act of demolition for what concerns the implementation of the framework of public spaces and renaturation. Demolish to open and not to rebuild.

Renaturation of the soil, restructuring of the building: to implement this experimental process over a long and controlled period and in a small area, a large facility is created in the heart of the park by the rehabilitation of the Emergency building. A building accommodating the various actors involved in the renaturation process: researchers and analysts, management services for areas undergoing renaturation, companies in charge of their construction, but also able to accommodate a large-scale teaching program such as a tree school.



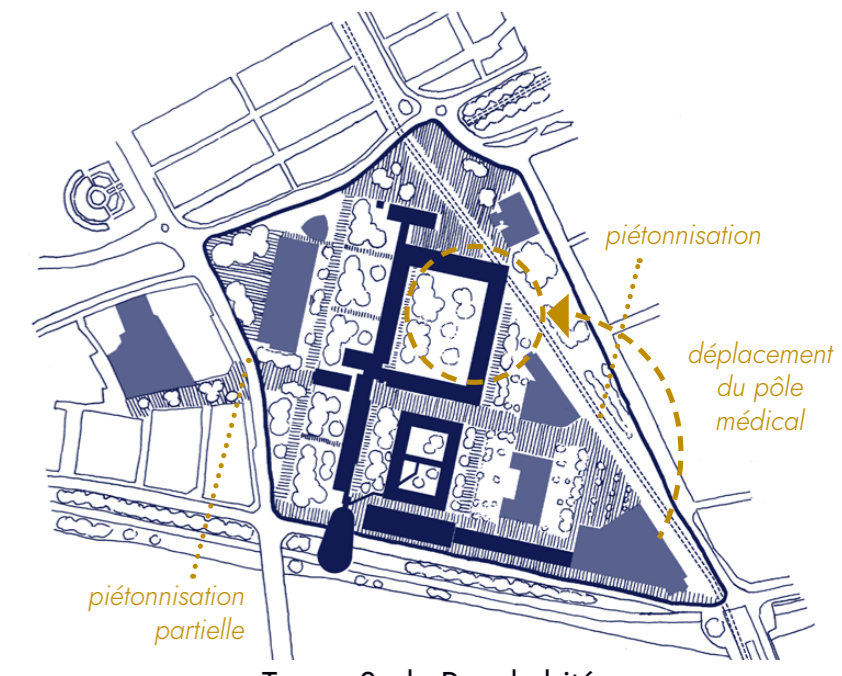
Etat actuel
Un site opaque et des sols imperméables



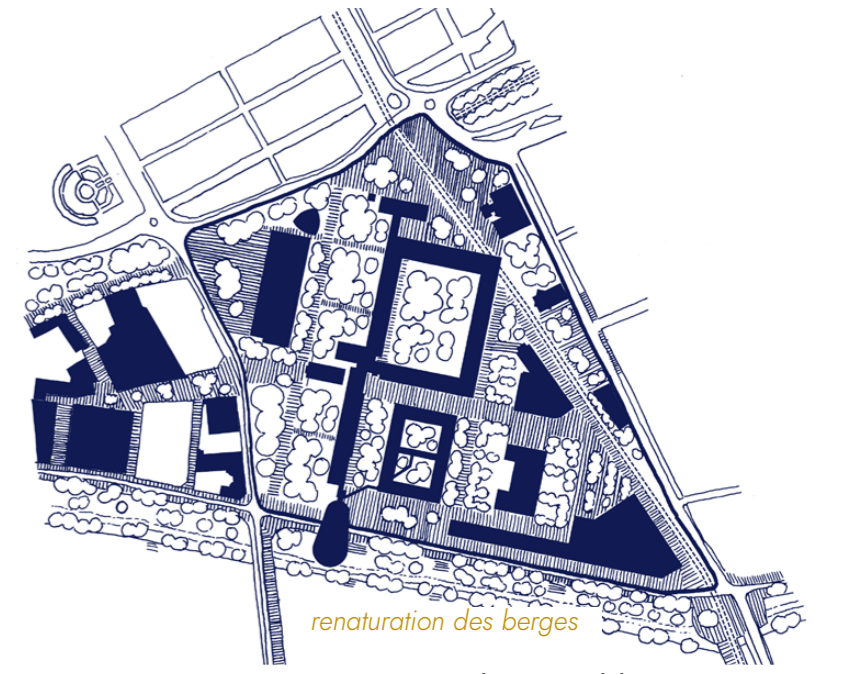
Temps 1 : Amorce
Réhabiliter le bâtiment principal et les urgences
restaurer le cycle de l'eau
Sols : désimperméabilisation et décompactage



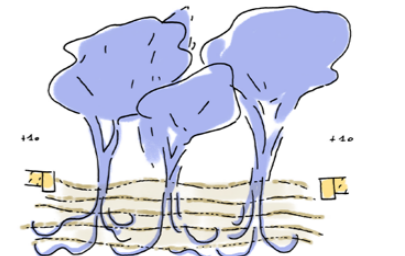
Temps 2 : Renaturation et réhabilitation
Un jardin expérimental / campus oricole pour accompagner la renaturation
Sols: Installation d'un substrat et plantes pionnières



Temps 3 : Le Parc habité
Habiter le jardin de renaturation et constituer un parc sportif
Sols, horizon +5ans : installation moyen terme des essences locales (cèpées, arbustes...)



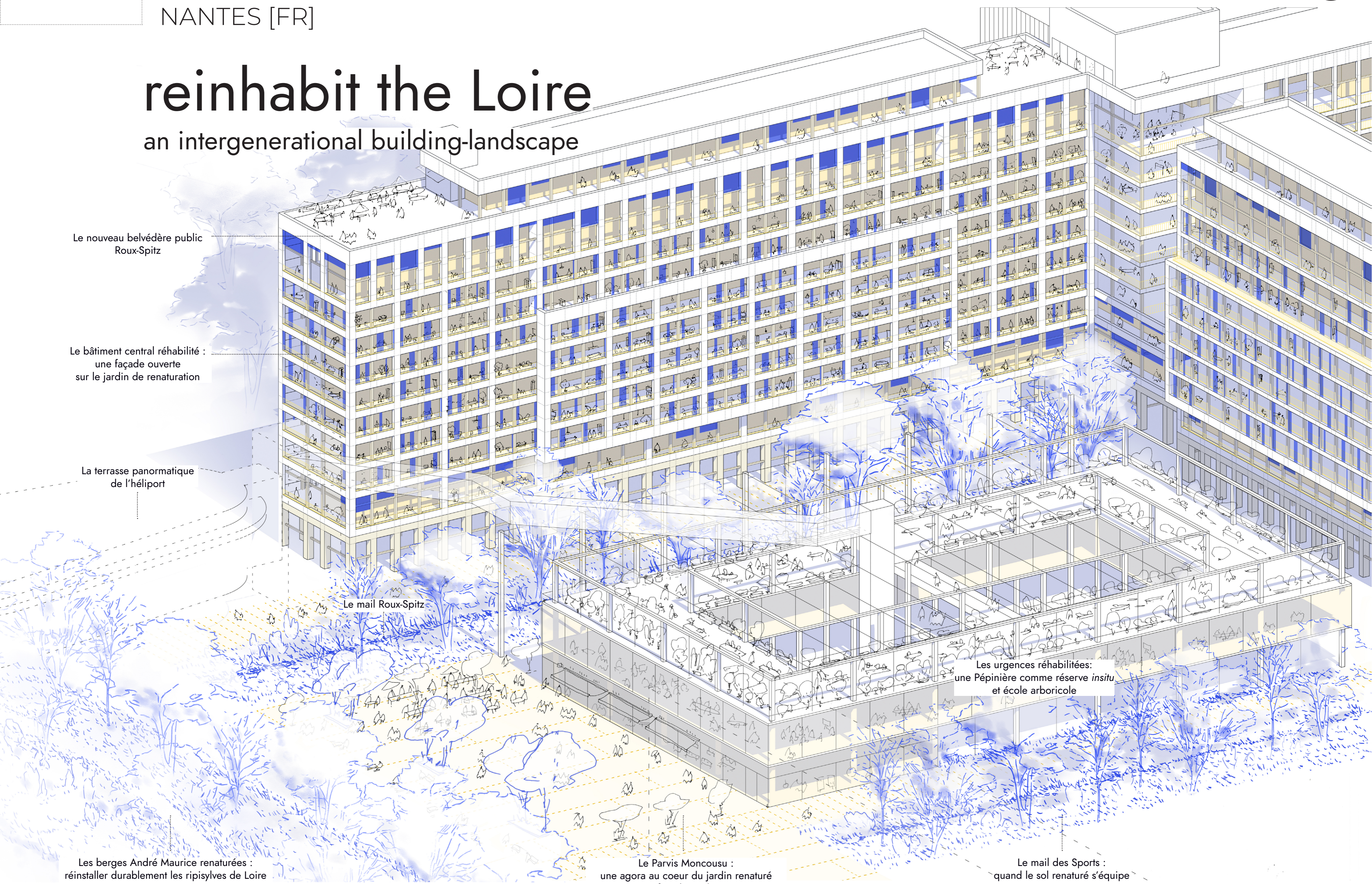
Temps 4 : Horizon des possibles
Un parc fertile et habité
Sols à +10ans : régénération durable plantations hautes tiges



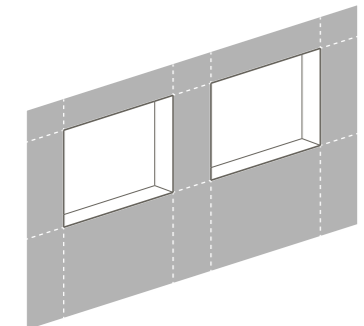
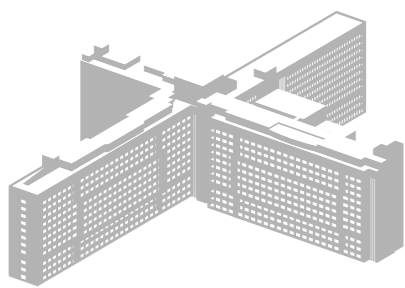
NANTES [FR]

reinhabit the Loire

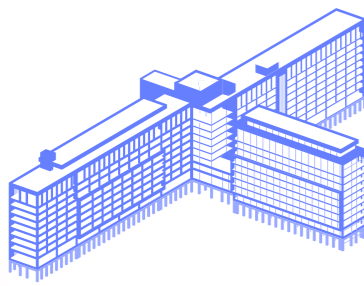
an intergenerational building-landscape



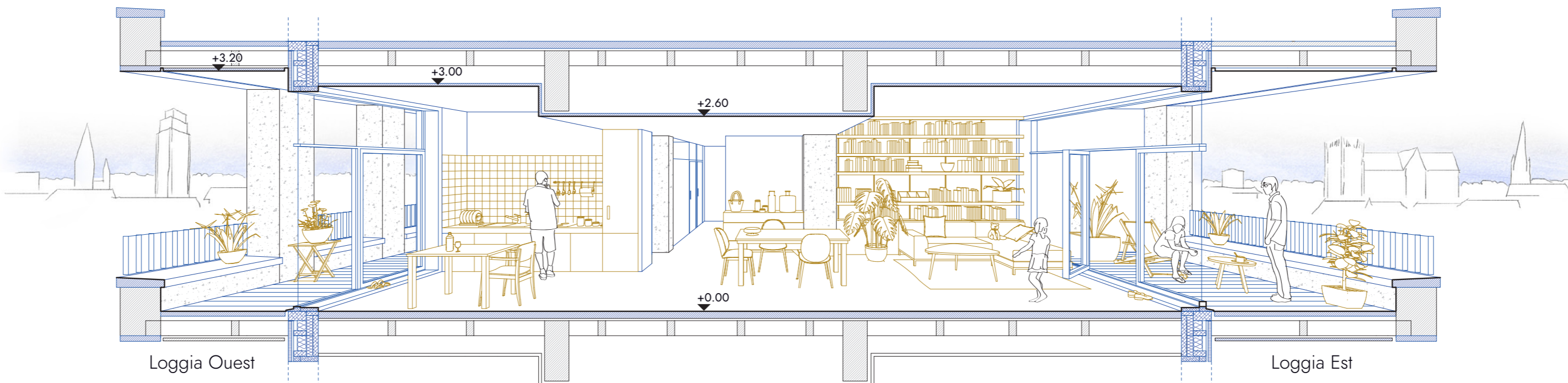
Stratégie de réhabilitation adressée sur le parc de renaturation : les loggias étendues



Façade initiale



Façade ré-ouverte

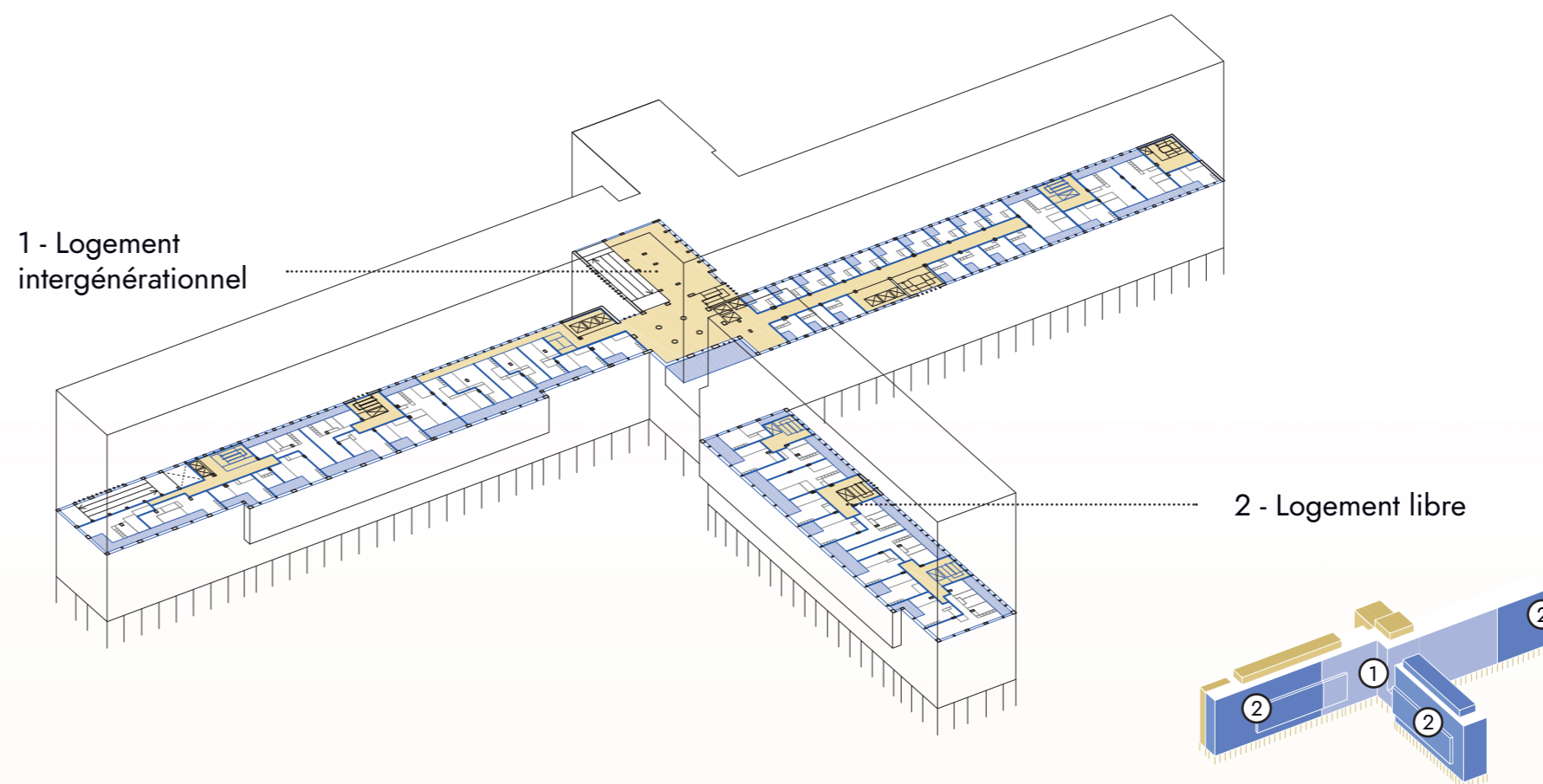


Coupe habitée sur logements libres traversants et prologements extérieurs

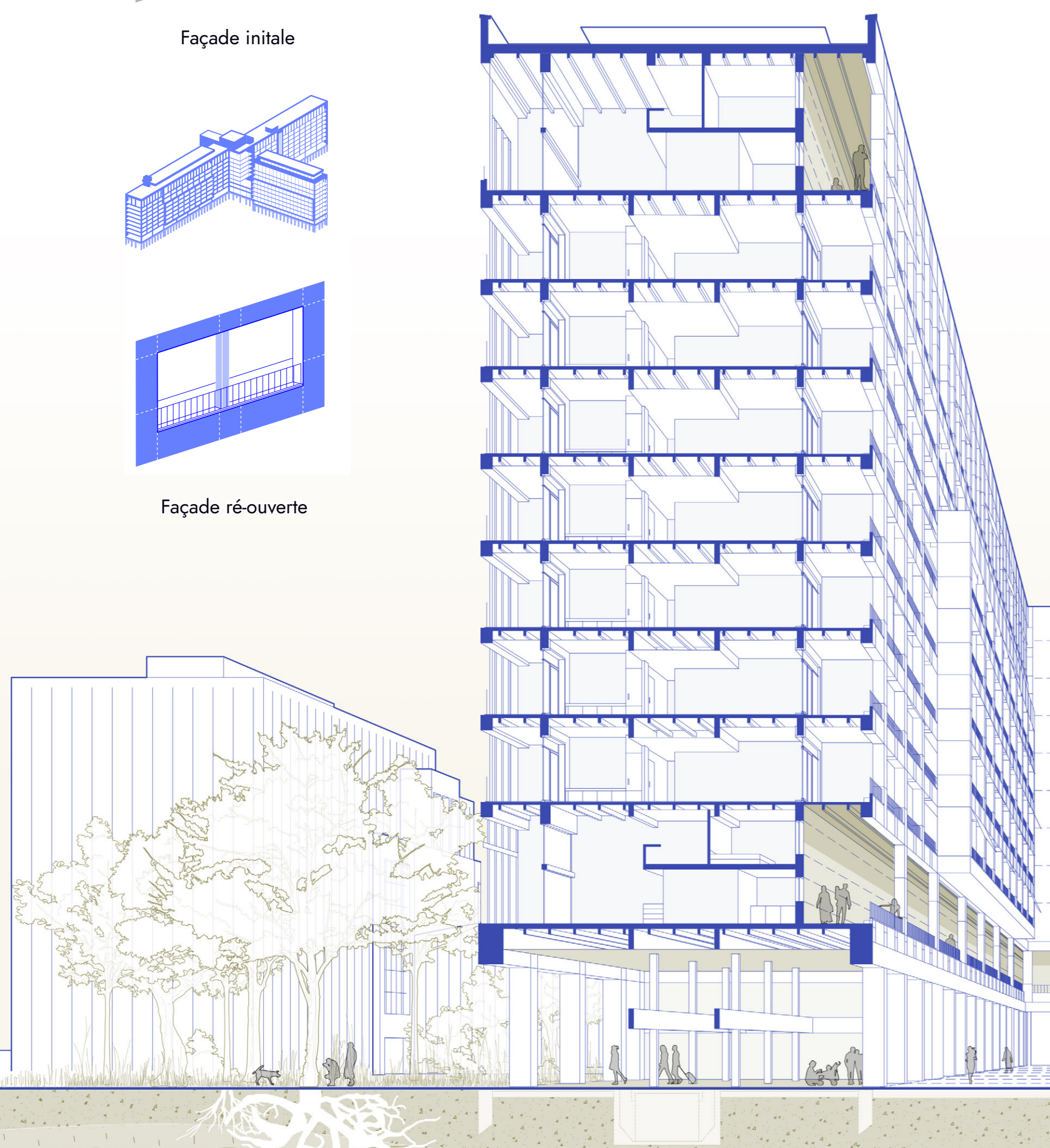
From the start of the project, it is proposed to reinstall this building in an open space prefiguring the future park. Targeted demolitions on the adjacent buildings and on restricted parts of the building have been undertaken to free up its surroundings and allow its rehabilitation. As a witness to the transformation of the hospital's built heritage, it is proposed to rehabilitate the main building of the hospital into a large intergenerational condenser offering a diversified residential program: individual free or social housing, housing in a residence adapted for seniors, housing in student residence, accommodation suitable for young workers.

Taking advantage of its cross organization, the project installs a neighborhood unit in its center, where the common functions of the collective residences are grouped and shared.

It is proposed to install the residential space "hollow" in the existing building, by creating a double skin: Outer skin, the original facade integrating the load-bearing framework is restructured while preserving its monumental character and without modifying the structure. Interior skin, a new light facade in the second row of the load-bearing facade constitutes the limit of the residential envelope.



Etage courant du CHU réhabilité et son programme



Le Bois de la Chapelle

Rez-de-chaussée ouvert
Galeries hautes aux premiers et derniers niveaux

Le mail Roux-Spitz

La pépinière et ressource